

Confocal Application Notes

Vol. 2 October 2004



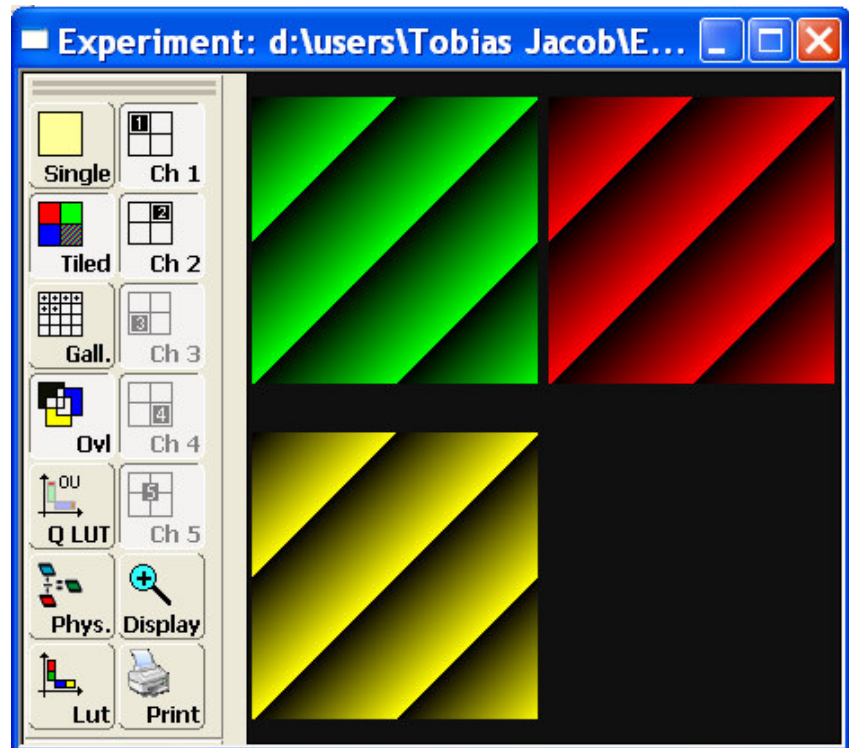
Customizing the User Interface of LCS

3. Viewer and Panel Box Templates

This application note describes how to customize the templates for the Viewer window and the panel box. It is the third and last note in this series explaining how to adapt the LCS user interface.

The Viewer templates

The viewer window is used to display the active images. It can also contain toolbars. For example, the standard Leica viewer template displays three toolbars: *Region of Interest*, *Movie* and *Viewer Commands*.



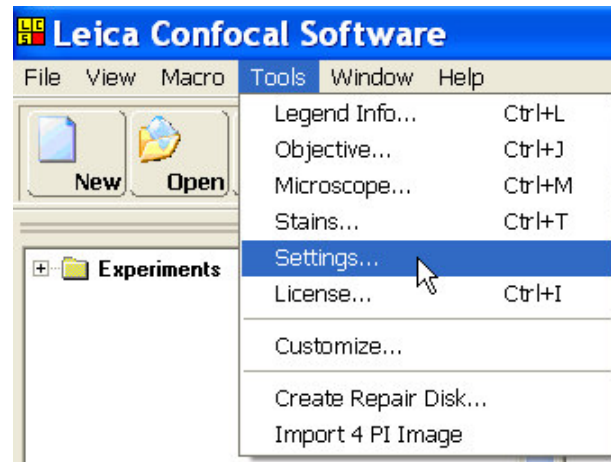
Open the *Tools* menu and select *Customize* to add or remove command buttons or toolbars to the viewer window. For detailed instructions please refer to our Application Note from September 2004.

Confocal Application Notes

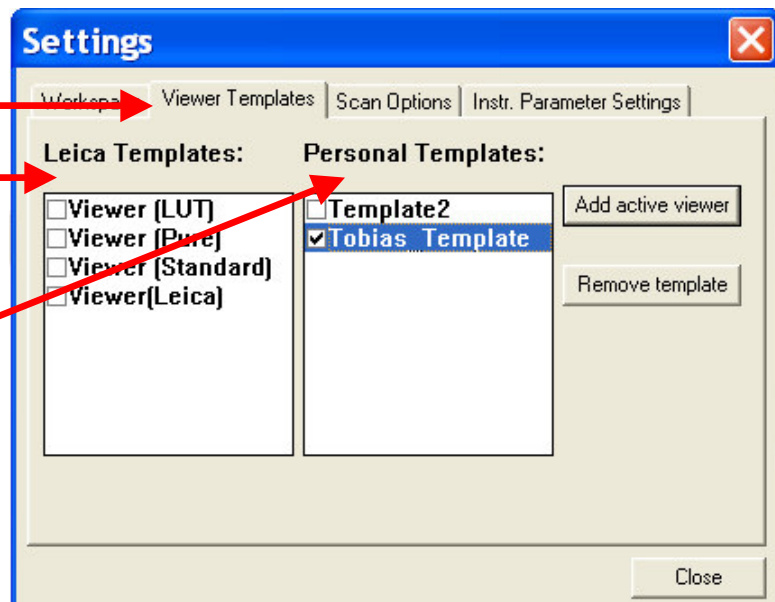
Vol. 2 October 2004



After you have customized the Viewer window, go to *Tools* and open the *Settings* dialog to save your changes.



In the *Settings* window open the *Viewer Templates* tab. This tab contains Leica's predefined layout templates for the Viewer window and the user-defined personal templates as well.



Click on *Add active viewer* to add the current layout as a template. To select a template to be used as the default template, check the box next to it. This template will be used every time you open a new Viewer window. Personal templates can be deleted using the *Remove template* button.

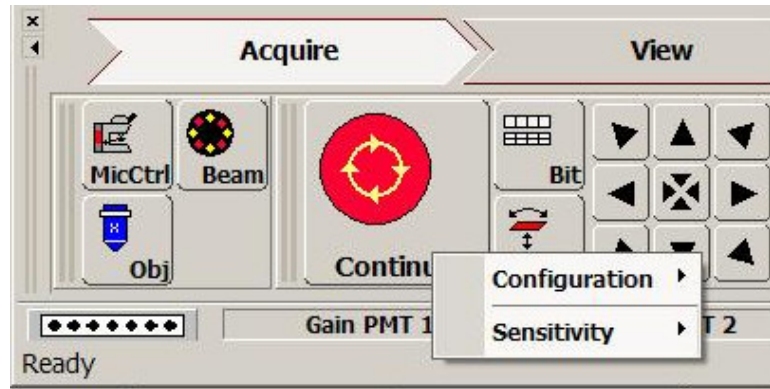
Confocal Application Notes

Vol. 2 October 2004



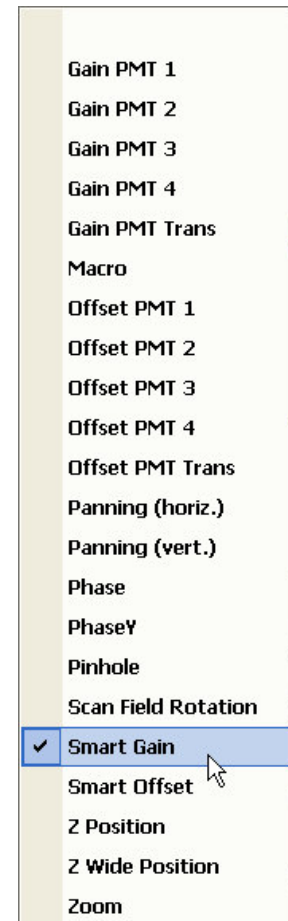
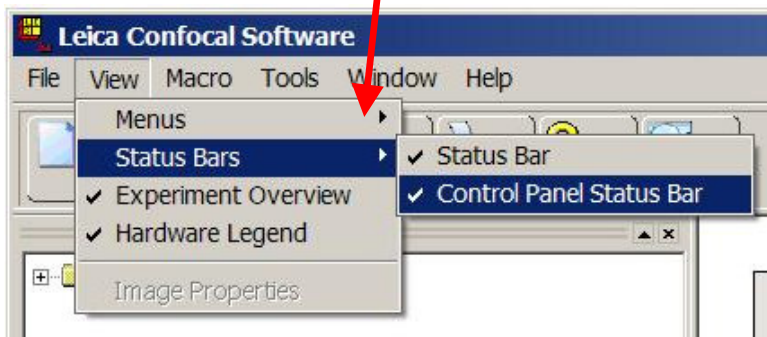
The panel box template

The panel box allows you control hardware functions such as PMT gain and offset, zoom or Z-position.



To change the configuration of the panel box right-click on the tab for each control knob and choose *Configuration*. Now you can select from a list which function you would like to assign to this knob.

To show or hide the control panel bar go to *View, Status Bars* and select or deselect *Control Panel Status Bar*.



Confocal Application Notes

Vol. 2 October 2004

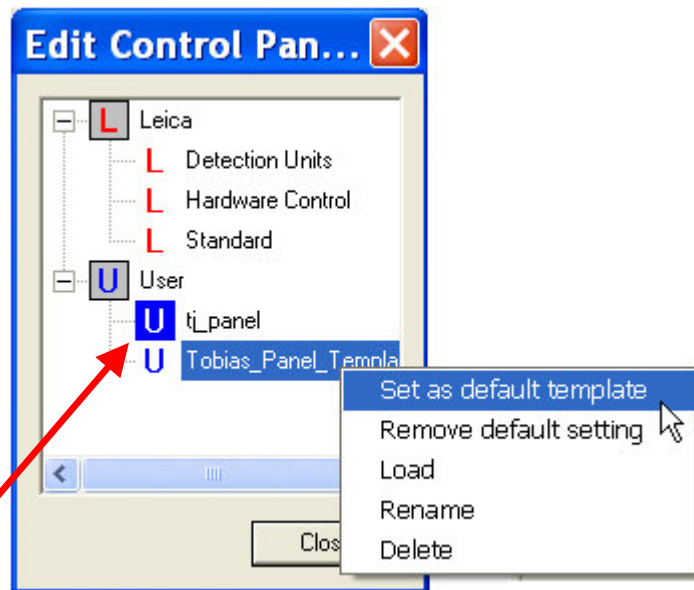


After you have made the changes you should now save the template. In the right-hand bottom corner of the LCS window you will find three buttons:



The first one will allow you to save the template. To change to a different template, click on the second button and choose a panel box configuration from the list of available templates.

The default layout that will be used every time LCS starts can be set using the third button. Click on it and you will see a list of predefined control panel templates by **Leica** and **user-defined** templates as well. The default template is easy to recognize: a red or blue box surrounds the **L** or **U**.



To change the default, select a new template and right-click on it. Choose Set as default template from the list and LCS will start with this configuration.